

Flat Cable Suspension Devices

Nylon/plastic construction for unsupported flat travelling cables

FCSD-2 for cables up to 42 mm wide

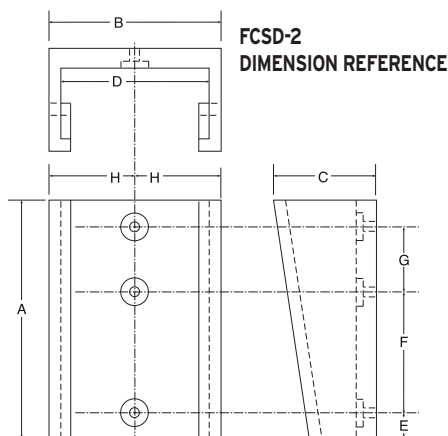
Part Number	Drawing Reference	Dimensions
FCSD-2	A	100 mm
	B	60 mm
	C	42 mm
	D	52 mm
	E	12 mm
	F	43 mm
	G	31 mm
	H	30 mm

Mounting holes are 5 mm with 14 mm counterbore

The FCSD-2 is made of a durable nylon/plastic. It consists of a bracket (dimensions listed above) that attaches to the hoistway wall or the car, and a clamping wedge that secures the cable in the bracket.

The FCSD-2 is designed to hold up to two cables totaling a maximum thickness of 12 mm and maximum width of 42 mm. If multiple cables are being supported, the narrowest width cable must not be less than 70% of the width of the widest cable.

Order two devices per cable, one for the car and one for the hoistway.



FCSD-3 for cables up to 76 mm wide

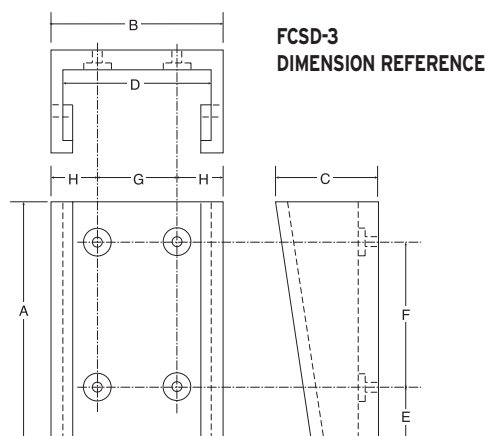
Part Number	Drawing Reference	Dimensions
FCSD-3	A	120 mm
	B	87 mm
	C	52 mm
	D	75 mm
	E	27 mm
	F	73 mm
	G	40 mm
	H	23.5 mm

Mounting holes are 6.35 mm with 14 mm counterbore

The FCSD-3 is made of a durable nylon/plastic. It consists of a bracket (dimensions listed above) that attaches to the hoistway wall or the car, and a clamping wedge that secures the cable in the bracket.

The FCSD-3 is designed to hold up to three cables totaling a maximum thickness of 15 mm and maximum width of 76 mm. If multiple cables are being supported, the narrowest width cable must not be less than 70% of the width of the widest cable.

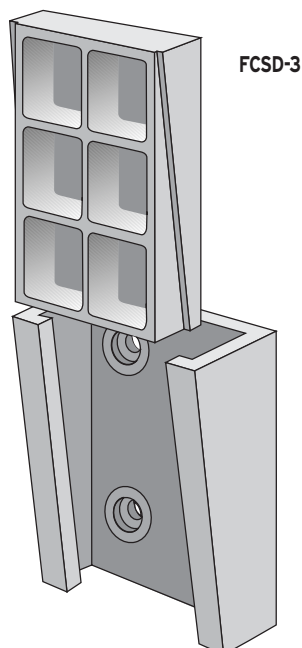
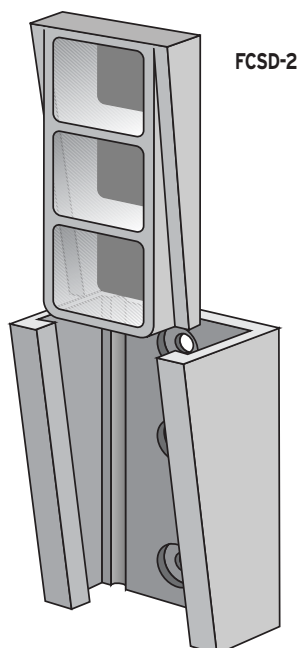
Order two devices per cable, one for the car and one for the hoistway.



Component Specifications

Materials

Both components are made of a molded nylon that resists abrasion, temperature and solvents.



Super-Flex[®] Travelling Cable/300V - 500V Steel Center



Complies with
IEC 60227-6

with power/signal only

Part Number	Product Code	Number/Size of Conductors	Steel Core Diameter	Maximum Hang Length	Approximate Loop Diameter	Cable Nom. Diameter	Cable Net Weight
18-612-24	WS 12-0.75 mm ²	12 / 0.75 mm ²	2.4 mm	274 m	0.50 m	16.8 mm	348 kg/km
18-618-24	WS 18-0.75 mm ²	18 / 0.75 mm ²	2.4 mm	259 m	0.53 m	17.8 mm	403 kg/km
18-624-24	WS 24-0.75 mm ²	24 / 0.75 mm ²	2.4 mm	205 m	0.59 m	19.8 mm	509 kg/km
18-636-24	WS 36-0.75 mm ²	36 / 0.75 mm ²	3.2 mm	274 m	0.72 m	24.1 mm	744 kg/km
18-648-24	WS 48-0.75 mm ²	48 / 0.75 mm ²	3.2 mm	257 m	0.75 m	25.1 mm	881 kg/km
18-660-24	WS 60-0.75 mm ²	60 / 0.75 mm ²	3.2 mm	201 m	0.88 m	29.2 mm	1126 kg/km
18-672-24	WS 72-0.75 mm ²	72 / 0.75 mm ²	4.0 mm	243 m	0.91 m	30.4 mm	1308 kg/km
18-506-24	WS 6-1.0 mm ²	6 / 1.0 mm ²	2.4 mm	274 m	0.39 m	13.0 mm	208 kg/km
18-512-24	WS 12-1.0 mm ²	12 / 1.0 mm ²	2.4 mm	260 m	0.52 m	17.3 mm	402 kg/km
18-518-24	WS 18-1.0 mm ²	18 / 1.0 mm ²	2.4 mm	223 m	0.56 m	18.5 mm	469 kg/km
18-524-24	WS 24-1.0 mm ²	24 / 1.0 mm ²	2.4 mm	179 m	0.61 m	20.3 mm	583 kg/km
18-530-24	WS 30-1.0 mm ²	30 / 1.0 mm ²	4.0 mm	275 m	0.71 m	23.5 mm	792 kg/km
18-536-24	WS 36-1.0 mm ²	36 / 1.0 mm ²	3.2 mm	264 m	0.76 m	25.4 mm	860 kg/km
18-548-24	WS 48-1.0 mm ²	48 / 1.0 mm ²	3.2 mm	205 m	0.83 m	27.8 mm	1104 kg/km
18-560-24	WS 60-1.0 mm ²	60 / 1.0 mm ²	3.2 mm	168 m	0.93 m	31.1 mm	1347 kg/km
18-572-24	WS 72-1.0 mm ²	72 / 1.0 mm ²	4.0 mm	199 m	1.00 m	33.4 mm	1597 kg/km

with power/signal, shielded pairs and coax -

Part Number	Product Code	Number/Size of Conductors & Shielded Pairs	Steel Core Diameter	Maximum Hang Length	Approximate Loop Diameter	Cable Nom. Diameter	Cable Net Weight
18-C46-55*	CSBX 46-US	4 / 2.0 mm ² 25 / 0.75 mm ² 8 sh. pairs / 0.50 mm ² 1 coax / RG6/U	4.0 mm	226 m	1.07 m	35.8 mm	1405 kg/km
18-X61-13	CSX 61	7 / 14 AWG • 2.0 mm ² 27 / 18 AWG • 0.75 mm ² 13 sh. pair / 20 AWG • 0.5 mm ² 1 coax / RG6/U	6.4 mm	275 m	1.26 m	41.9 mm	2043 kg/km
18-X62-55	CSBX 62	4 / 2.0 mm ² 49 / 0.75 mm ² 4 sh. pairs / 0.50 mm ² 1 coax / RG6/U	4.0 mm	185 m	1.13 m	37.6 mm	1713 kg/km
18-075-55	CSBX 75	20 / 2.0 mm ² 38 / 0.75 mm ² 8 sh. pairs / 0.50 mm ² 1 coax / RG6/U	6.4 mm	274 m	1.29 mm	42.9 mm	2344 kg/km

Custom cable designs are available. For longer hang length applications, call with your requirements.

*"Made in USA" is printed on this cable.

Insulation colours: Last conductor (ground) of the largest sized conductor (2.0 mm²) is yellow/green and all others are black.

For insulation colour details on combination cables, contact your Draka EP representative or distributor.

RG6/U is the standard coaxial cable used in CSBX and CSX-series Super-Flex cables and is used primarily for CCTV applications.

75 ohm, UL listed, CSA certified. Center conductor is 0.5 mm² soft drawn stranded copper insulated with cellular polyethylene, wrapped with aluminum tape, braided with tinned copper and jacketed with flame-retardant PVC.

Attenuation: 2.13 dB/100m @ 10 MHz
5.08 dB/100m @ 50 MHz
Capacitance: 56.7 pf/m

RG11/U is available as an option on CSBX-series Super-Flex cables and is used primarily for CCTV applications.

75 ohm, UL listed. Center conductor is 1.3 mm² soft drawn stranded copper insulated with cellular polyethylene, braided with bare copper for 97% coverage, and jacketed with flame-retardant PVC.

Attenuation: 2.16 dB/100m @ 10 MHz
4.26 dB/100m @ 50 MHz
Capacitance: 56.7 pf/m

Component Specifications

Steel Central Support

Preformed, flexible, low torsion, zinc-coated, steel wire rope, insulated with 70° C flame-retardant PVC and covered with a rayon or cotton braid.

Stranded Conductors

Bunch-stranded bare soft drawn copper, insulated with coloured 70° C flame-retardant PVC, identified by insulation colour or a combination of insulation colour and numerical markings appearing at least 13 times per meter.

Shielded Pairs

Composed of insulated conductors, braided with 0.50 mm² bare copper for 85% coverage, and jacketed with 70° C coloured, flame-retardant PVC.

Coax Cables

RG6/U style with 0.5 mm² stranded copper conductor and cellular polyethylene dielectric. Shield is tinned copper braid and overall aluminum foil. Jacket is flame-retardant PVC.

Jute Filler

Electrical-grade dry jute distributes interlayer pressure and reduces conductor friction.

Binder

Strong, helically-wound synthetic fibre.

Braid

A rayon or cotton braid is applied with 95% coverage.

Jacket

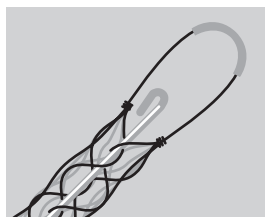
70° C PVC specifically compounded for flexibility and abrasion resistance. Polyurethane (PUR) jackets are available upon request.

Mesh Grips Stainless Steel

for travelling cable with maximum hanging lengths of 61 m

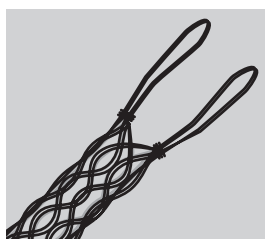
Single Eye/Single Weave/Split Rod

Part Number	Cable Diameter Range	Maximum Load*	Eye Length	Nominal Mesh Length
024-03-014	1.60 to 1.88 cm	186 kg	203 mm	216 mm
024-03-015	1.91 to 2.51	186 kg	203 mm	267 mm
024-03-017	2.54 to 3.15	240 kg	229 mm	317 mm
024-03-018	3.18 to 3.78	408 kg	254 mm	368 mm
024-03-019	3.81 to 4.42	408 kg	305 mm	394 mm



Double Eye/Double Weave/Closed Mesh

Part Number	Cable Diameter Range	Maximum Load*	Eye Length	Nominal Mesh Length
024-20-1504	2.54 to 3.15	545 kg	305 mm	356 mm
024-20-1470	3.18 to 3.78	745 kg	305 mm	381 mm
024-20-1510	3.81 to 4.42	755 kg	305 mm	432 mm
024-20-1499	4.45 to 5.05	818 kg	305 mm	483 mm
024-20-1542	5.08 to 6.35	818 kg	305 mm	533 mm



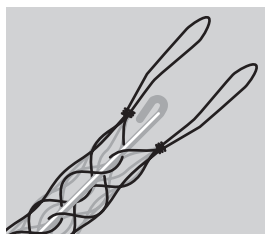
Double Eye/Double Weave/Split Laced

Part Number	Cable Diameter Range	Maximum Load*	Eye Length	Nominal Mesh Length
024-20-1284	1.91 to 2.51	282 kg	102 mm	330 mm
024-20-1285	2.54 to 3.15	364 kg	102 mm	356 mm
024-20-1286	3.18 to 3.78	364 kg	102 mm	381 mm
024-20-1287	3.81 to 4.42	364 kg	102 mm	432 mm
024-20-1500	4.45 to 5.08	818 kg	305 mm	483 mm



Double Eye/Single Weave/Split Rod

Part Number	Cable Diameter Range	Maximum Load*	Eye Length	Nominal Mesh Length
024-03-005	2.54 to 3.15	241 kg	127 mm	317 mm
024-03-006	3.18 to 3.78	409 kg	127 mm	368 mm
024-03-007	3.81 to 4.42	409 kg	127 mm	394 mm
024-03-008	4.45 to 5.08	545 kg	152 mm	419 mm



Component Specifications

Stainless Steel

These grips are intended for low rise installations only! A 4:1 safety factor has been applied to the maximum load.

NEVER EXCEED THE MAXIMUM LOAD.

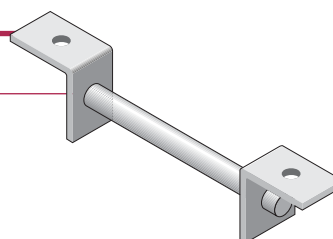
To maintain original grip set, the base of all grips should be secured with several wraps of vinyl tape.

Installations of over 40 stories should utilize the heavy duty double-weave grips for back-up purposes ONLY and not as the primary hanger.

Jute Core Travelling Cable Hanger

for installing round cable grips

Part Number	Description
HGRJC-8	Bracket used to hold/support grips that hold jute core cables 20 cm clear between brackets



Door / Door Operator Components

Light curtains

Formula Systems light curtains

Part Number	Description
FDS-0735US05	SlimScreen light curtain/interface , 9 x 26 mm profile with 35 beam paths, 1.86 m height standard, 2 m height version available, interface is selectable 115/230 VAC, signal output is volt-free changeover relay contacts
FDS-1047US05	SafeZone 3D light curtain/interface , 16 x 36 mm profile with ten 3D zones and 47 beam paths, interface is selectable 115/230 VAC, signal output is volt-free changeover relay contacts
FDS-0547US05	SafeScreen light curtain/interface , 30 x 20 mm profile with 47 beam paths, interface is selectable 115/230 VAC, signal output is volt-free changeover relay contacts

The **SlimScreen** light curtain is designed for elevators with narrow running clearances. It features a non-parallel array of 35 infrared beam paths in a compact 9 x 26 mm profile. The SlimScreen can be fitted directly to car doors or static-mounted (kit available separately).

The **SafeZone 3D** light curtain is a unique combination of non-intrusive landing door '3D' protection and conventional '2D' sensing for the ultimate in safety. Ten 3D zones and 47 2D non-parallel beam paths are packaged in a 16 x 36 mm profile.

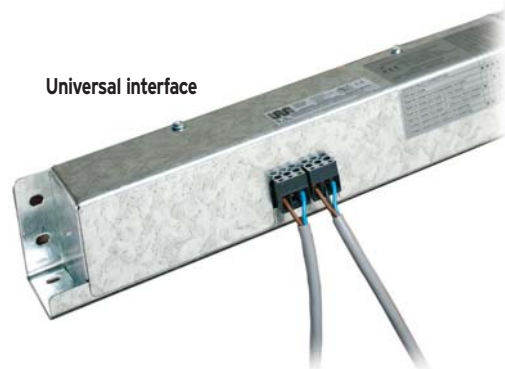
The **SafeScreen** light curtain is ideal for modernisation applications. It features 47 non-parallel infrared beam paths in a 30 x 20 mm profile to insure safe elevator operation.

All kits come with the multi-function FPS 0271 universal interface, (a rugged and easily-installed unit equipped with multi-function buzzer/nudging) and an installation kit.

The standard SlimScreen and SafeZone 3D installation kits include fixings, cable retainers, cobalt-tipped drill bit (for stainless steel,) screwdriver, cable ties and instructions.

The optional SlimScreen static-mount kit is for mounting the units at the back of the door tracks and not to the doors themselves.

The SafeScreen installation kit includes mounting brackets, fixings, cable retainers, cobalt-tipped drill bit (for stainless steel), screwdriver, cable ties and instructions.



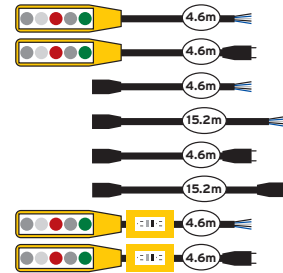
Electrical / Electronics

Limit switches and pendant stations

Five-button pendant stations - Up, Down, Common, Locking Stop and Tubular Key Switch

Part Number	Description	Cable Length m	Termination(s)
PEND-5W-T	Pendant station with pigtail	4.6	loose wires
PEND-5W-TC	Pendant station with pigtail	4.6	connector
PEND-15-1	Cable extension	4.6	connector/wires
PEND-50-1	Cable extension	15.2	connector/wires
PEND-15-2	Cable extension	4.6	connector/connector
PEND-50-2	Cable extension	15.2	connector/connector
PEND-5W-TG	Pendant station with pigtail and GFCI	4.6	loose wires
PEND-5W-TGC	Pendant station with pigtail and GFCI	4.6	connector

PEND-5 series pendant stations are made of rugged high-impact plastic for both durability and electrical safety. Keyed lockout and two-handed operation further increase their safe usage. Options include a 4.6 meter pigtail; GFCI (Ground Fault Circuit Interrupter) on the pigtail; connectorized pigtails; and modular cable extensions of either 4.6 meters or 15.2 meters.



Stop switches

Part Number	Description	Quantity
EN418	Locking stop switch	1

EN418 stop switches use a push-pull action for sure, safe operation. A four-prong guard helps prevent accidental engagement of the switch. Large diagrams printed on the switch show clearly which are the ON and STOP positions, while indicator windows on the button show 'green for go' when the switch is in the ON position and 'red for stop' when in the STOP position.



Limit switches

Part Number	Description
FT140X11	Limit switch, with adjustable angular roller 1 NO and 1 NC contacts Rated for 400V AC @ 1.8A, 24V DC @ 2.8A

Limit switches have tough thermoplastic housings that are sturdy, dust-tight, water-resistant and flame-retardant. They feature a quiet, slow-return action and an electrically-separate double-break contact block.



Hatch equipment limit switch for Schindler/Westinghouse

Part Number	Description
STS-1	418 482 Leveling switch, solid state



Hoistway and Car Safety

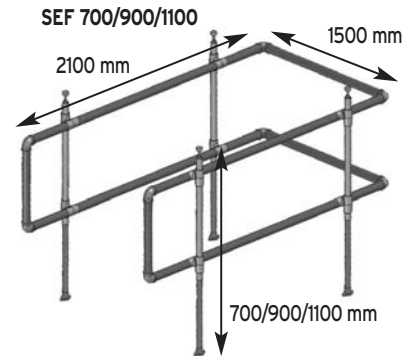
Retractable SEF® Safety Elevator Fence - patent 1029974

Part Number	Description and Maximum Dimensions	Maximum Height Adjustment	Minimum free space car top to ceiling with counterweight at buffer
200-01-700	SEF 700, top of car retractable safety fence, 700 mm height, 1500 mm wide, 2100 mm length	350 mm	650 mm
200-02-900	SEF 900, top of car retractable safety fence, 900 mm height, 1500 mm wide, 2100 mm length	435 mm	765 mm
200-03-110	SEF 1100, top of car retractable safety fence, 1100 mm height, 1500 mm wide, 2100 mm length	520 mm	880 mm
200-04-000	SEF SPRING, replacement spring		

The patented Safety Elevator Fence (SEF®) is a self-adjusting cabtop fence designed especially for lifts with a low shaft overhead where a rigid fence cannot be installed.

The SEF® is activated when it touches the ceiling of the shaft and automatically adjusts itself downward. When the elevator goes down, the SEF® expands and locks in its original position, creating a safe workspace.

The SEF® can be installed within two hours. All components come in one box with an installation guide. The 34 mm aluminum tubes can be cut easily with hand tools to the required size. It's reliable and certified by the Dutch Liftinstituut, ref. NL.05.400.1002.072.01 and fully complies with NEN-EN 81-1/-2 safety regulations to be implemented over the coming years.

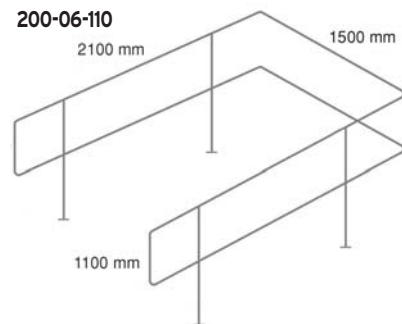
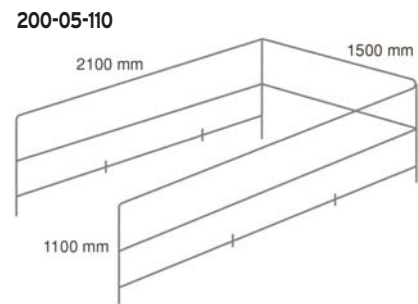


Fixed construction Safety Elevator Fence

Part Number	Description and Maximum Dimensions
200-05-110	SEF 1100, top of car fixed safety fence 1100 mm height, 1500 mm wide, 2100 mm length
200-06-110	SEF 1100, top of car fixed safety fence, mid-supported 1100 mm height, 1500 mm wide, 2100 mm length

The fixed-construction Safety Elevator Fence (SEF) is a cabtop fence that is solid, secure and dependable.

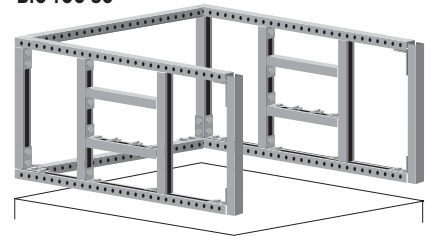
The SEF fixed fence can be installed within two hours. The 34 mm lightweight aluminum tubes can be cut easily to the required size with hand tools. It's reliable, approved by the Dutch Liftinstituut and fully complies with all current regulations.



BIG TOC and LIL TOC - Top Of Car Safety Rails

Part Number	Description	Orientation	Size Range (min > max)		Matching Toe-board Part Number
			Width (m)	Length (m)	
100-01	LIL-TOC	front opening	1.45 > 2.08	1.45 > 2.08	100-01TB
100-03	BIG-TOC 60	front opening	1.75 > 3.00	1.75 > 3.00	100-03TB
100-05	BIG-TOC 72	front opening	1.75 > 3.00	2.06 > 3.30	100-05TB
100-07	LIL-TOC	front and rear opening	n/a	1.45 > 2.08	100-07TB
100-09	BIG-TOC 60	front and rear opening	n/a	1.75 > 3.00	100-09TB
100-11	BIG-TOC 72	front and rear opening	n/a	2.06 > 3.30	100-11TB
100-13	LIL-TOC	front opening	1.14 > 1.78	1.75 > 2.69	100-13TB
100-15	LIL-TOC	front opening	1.45 > 2.08	1.75 > 2.69	100-15TB
100-17	LIL-TOC	front opening	1.45 > 2.08	1.14 > 1.78	100-17TB
100-19	Extension kit	front opening	n/a	n/a	n/a
100-20	Extension kit	front and rear opening	n/a	n/a	n/a

BIG-TOC 60



BIG-TOC and LIL-TOC (Top Of Car) safety rail kits install on top of freight and passenger traction elevators to create a safer and more secure car-top environment for both people and their tools. These permanent guardrail kits are easy to install and quickly adjust to the required size.

They are adaptable to both front-opening and front-and-back opening car types. An optional debris net serves as an added measure to prevent the loss of tools and other important items.

All rails, bolts, nuts and hardware are included. The mesh debris shield is optional. The major siderail components come pre-assembled. Installation generally takes under an hour.

Hoistway and Car Safety

BIG-HOSS™ Hoistway Obstruction Shield System

Part Number	Description
BIG-HOSS	Hardware Cloth Base Mounting Kit (30 m length)
BIG-HOSS-75	Hardware Cloth Base Mounting Kit (22 m length)
BIG-HOSS-150	Hardware Cloth Base Mounting Kit (45 m length)

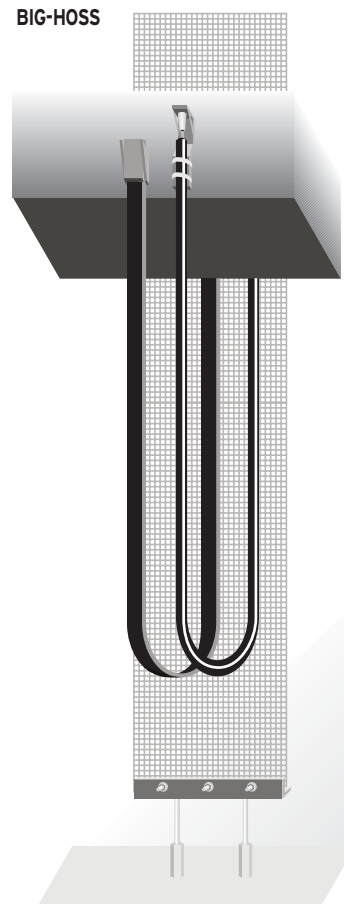
The Hoistway Obstruction Shield Systems are used to prevent round and flat elevator travelling cable from repetitively striking obstructions in the hoistway and from crossing over into adjoining hoistways. Their use may help avoid possible interference and extend the life span of the installed elevator cables.

The BIG HOSS kit includes 30 m of the 0.46 m wide shielding material (13 mm mesh hardware cloth) and all the mounting hardware needed to attach the shield within the hoistway. All components are shipped in a single bag.

The LIL HOSS kit includes an additional 30 m of the shielding material and all the mounting hardware needed to attach the shield to the top of the BIG HOSS system and walls of the hoistway. Like the BIG HOSS, all LIL HOSS components are shipped in a single bag.

LIL-HOSS™ Hoistway Obstruction Shield System Extensions

Part Number	Description
LIL-HOSS	Hardware Cloth Extension Mounting Kit (30 m length)
LIL-HOSS-75	Hardware Cloth Extension Mounting Kit (22 m length)
LIL-HOSS-150	Hardware Cloth Extension Mounting Kit (45 m length)



Miscellaneous Components

for Otis

Washers, nuts and pins

Part Number	Otis Part Number	Description
BJN-1		Brass jam nut, 10 - 32
BJN-2		Brass jam nut, 1/4 - 20
BJN-3		Brass jam nut, 5/16 - 18
BJN-4		Brass jam nut, 3/8 - 16
BJN-5		Brass jam nut, 1/2 - 13
BJN-6		Brass jam nut, 5/8 - 11
BW-1		Brass washer, 31.8 mm O.D. x 14.3 mm I.D. x 2.4 mm thick
BW-2		Brass washer, 25.4 mm O.D. x 4.8 mm I.D. x 2.4 mm thick
BW-3		Brass washer, 22.2 mm O.D. x 8.7 mm I.D. x 1.6 mm thick
BW-4		Brass washer, 14.3 mm O.D. x 6.4 mm I.D. x 0.8 mm thick
BHP-1		Brass hinge pin, 12.7 mm dia. x 101.6 mm L
BHP-2		Brass hinge pin, 9.5 mm dia. x 101.6 mm L
BHP-3		Brass hinge pin, 12.7 mm dia. x 50.8 mm L
BHP-4		Brass hinge pin, 9.5 mm x 76.2 mm L

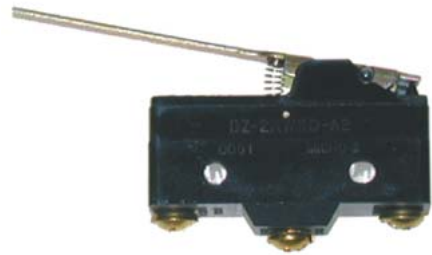
Distance pieces

Part Number	Otis Part Number	Description
ODP-1	133615	12.7 mm x 79.4 mm x 82.6 mm
ODP-2	127782	25.4 mm x 54.0 mm x 88.9 mm
ODP-3	126229	22.2 mm x 41.3 mm x 88.9 mm
ODP-4	129422	12.7 mm x 36,5 mm x 82.6 mm
ODP-5	118716	15.9 mm x 25.4 mm x 82.6 mm

Couplings

Part Number	Otis Part Number	Description
OM-3		Sureflex pump coupling, 70 mm O.D. x 45 mm I.D. x 40 mm L
OM-3A		Sureflex pump coupling, 102 mm O.D. x 70 mm I.D. x 56 mm L

ODO-1A



BJN-1 thru BJN-6



BW-1 thru BW-4



BHP-1 thru BHP-4



ODP-1 thru ODP-5



OM-3, OM-3A



Miscellaneous Components

Moulded escalator components

Handrail guides, plates and step guides

Part Number	Product Code	Description
HD-99-040	JAA384AJY1	Handrail entry guard deflector insert for Otis
HD-99-041	JAA384AJY2	Handrail entry guard deflector insert for Otis
HD-99-042	JAA384AJY3	Handrail entry guard deflector insert for Otis
HD-99-044	JAA384AJY4	Handrail entry guard deflector insert for Otis
HD-99-071		Handrail entry guard inside moulding
HD-99-032	GAB438BNX1	Handrail entry guide for Otis
HD-99-033	GAB438BNX2	Handrail entry guide for Otis
HD-99-021	GAA402BNF1	Handrail entry guard insert front plate for Otis
HD-99-022	GAA402BNF2	Handrail entry guard insert front plate for Otis
HD-99-023	GAA402BNF3	Handrail entry guard insert front plate for Otis
HD-99-024	GAA402BNF4	Handrail entry guard insert front plate for Otis
HD-99-025	GAA402BNF5	Handrail entry guard insert front plate for Otis
HD-99-026	GAA402BNF6	Handrail entry guard insert front plate for Otis
HD-99-072		Handrail entry guard insert front plate
HD-99-033	GAA459A	Shockproof plate for Otis
HD-99-018	G0455G3	Step insert strip for Otis
HD-99-027	GAA455BK1	Step insert strip
HD-99-038	G0455G16	Step insert strip for Otis
HD-99-039	G0455G17	Step insert strip for Otis

HD-99-040



HD-99-071



HD-99-032



HD-99-021



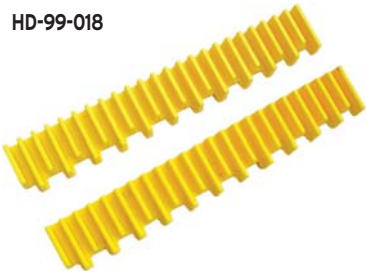
HD-99-072



HD-99-030



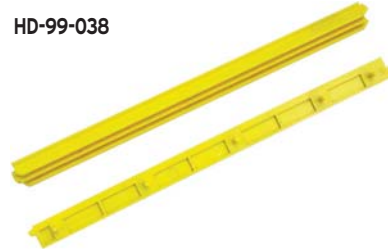
HD-99-018



HD-99-027



HD-99-038



This catalog lists our most popular parts; thousands of others are available. Call us or visit our web site for more information.

miscellaneous

Miscellaneous Components

Plastic components

Clips, guards, supports and strips

Part Number	Product Code	Description
HD-99-014	SMV244496, Z575685	Clip item for Schindler
HD-99-012	MK14/030	Plug for Schindler
HD-99-001	230005	Guard board for Schindler
HD-99-015	SNV465934	Middle pad for Schindler
HD-99-016		Support piece for Schindler
HD-99-017		Panel gasket for Schindler
HD-99-013	SDT315529, Z552966	Guide strip for Schindler
HD-99-020	GAA385GF	Guide strip for Otis

HD-99-014



HD-99-012



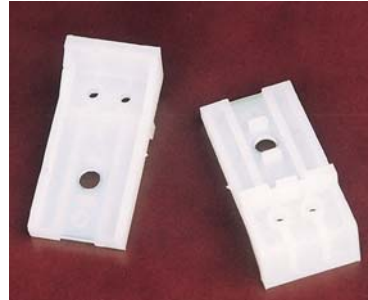
HD-99-001



HD-99-015



HD-99-016



HD-99-017



HD-99-013



HD-99-020



This catalog lists our most popular parts; thousands of others are available. Call us or visit our web site for more information.

Miscellaneous Components

Rubber components

Gaskets, pads, laths and sheaths

Part Number	Product Code	Description
HD-99-061	SZ04012	Rubber gasket
HD-99-056	DRPHD15	Rubber dampening pad, 250 mm x 250 mm x 15 mm
HD-99-045	581740, 35154	Elastic sheath for Schindler
HD-99-073		Soundproof rubber
HD-99-074		Rubber lath
HD-99-075		Sponge strip
HD-99-076		Rope end rubber
HD-99-077		Soundproof board
HD-99-065		Isolation pads

HD-99-061



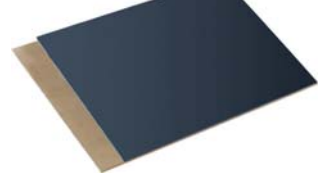
HD-99-056



HD-99-045



HD-99-073



HD-99-074



HD-99-075



HD-99-076



HD-99-077



HD-99-065



This catalog lists our most popular parts; thousands of others are available. Call us or visit our web site for more information.

Miscellaneous Components

Rubber components

Gaskets, pads, laths and sheaths

Part Number	Product Code	Description
HD-99-007	583387, Z105839	Ring sheath, rubber fixation pieces for Schindler
HD-99-047	782194	Button bumper
HD-99-044	328227	Guard piece
HD-99-029	GAA457LV	Floor plate for Otis
HD-99-028	GAA457LL	Floor plate for Otis
HD-99-066		Rubber waved tube for Otis
HD-99-067		Handrail cover
HD-99-019	GAA384JZ	Handrail guide insert guard for Otis
HD-99-068		Handrail guide insert guard

HD-99-007



HD-99-047



HD-99-044



HD-99-029



HD-99-028



HD-99-066



HD-99-067



HD-99-019



HD-99-068



This catalog lists our most popular parts; thousands of others are available. Call us or visit our web site for more information.

Miscellaneous Components

Rubber/metal components

Stops, buffers and dampeners

Part Number	Product Code	Description
HD-99-059	SMT405884 Z575413	Stop strip for Schindler
HD-99-048	10001630 BM00748	Suspension disk
HD-99-002	249281, B50/20	Buffer B50/20 for Schindler
HD-99-003	295077, B25/28	Buffer B25/28 for Schindler
HD-99-004	298110, A50/40	Buffers A50/40-M10*28-SH45A NR for Schindler
HD-99-005	298111, A70/40	Buffers A70/40-M10*30-SH45A NR for Schindler
HD-99-006	535874, B75/50	Buffer B75/50-M12*37-SH45A NR for Schindler
HD-99-008	583703, F40/15	Buffer F40 with single head for Schindler
HD-99-009	633204, A40/40	Buffer A40/40 for Schindler
HD-99-010	997136, A50/20	Buffers A50/20-M10*28-NR-SH45A for Schindler
HD-99-011	57003938, A84/59	Buffer A84/59 for Schindler
HD-99-034	G0320Y12	Buffer for Otis
HD-99-035	G0320Y19	Buffer for Otis
HD-99-036	G0320Y20	Buffer for Otis
HD-99-037	G0320Y21	Buffer for Otis
HD-99-046	BM11804, A78/50	Dampening element for Schindler
HD-99-049	A Type	Dampener
HD-99-070	Z643276	Isolation element for Schindler
HD-99-078		Cab isolation
HD-99-079		Cab isolation
HD-99-080		Door guide
HD-99-081		Door guide
HD-99-082		Door guide

HD-99-059



HD-99-048



HD-99-002 THRU HD-99-037



HD-99-049



HD-99-070



HD-99-078



HD-99-079



HD-99-080



HD-99-081



HD-99-082



This catalog lists our most popular parts; thousands of others are available. Call us or visit our web site for more information.

miscellaneous

Miscellaneous Components

Rubber/metal components

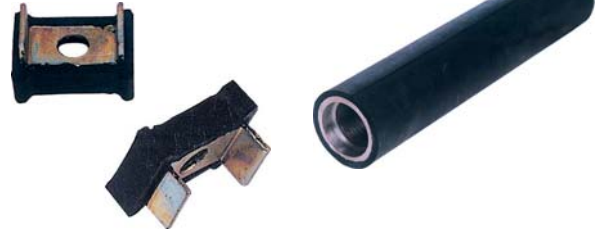
Guide rails, brackets, dampeners and bumpers

Part Number	Product Code	Description
HD-99-031	GAA483CNJ	Escalator guide rail for Otis
HD-99-083		Lock piece
HD-99-084		Iron core rubber guide wheel
HD-99-085		Iron core rubber wheel
HD-99-086		Air conditioner bracket
HD-99-053	DEK3R06975	Dampener
HD-99-062	TK21-100-00	Bumper
HD-99-087		Bumper
HD-99-054	DEK3R67664 ACE	Bumper
HD-99-055	DEK3R67664 BDF	Bumper



HD-99-083

HD-99-084



HD-99-085

HD-99-086

HD-99-053



HD-99-062

HD-99-087



HD-99-054

HD-99-055



miscellaneous

This catalog lists our most popular parts; thousands of others are available. Call us or visit our web site for more information.

Specialty Electronics

Modular emergency lighting system

Shaft Light hoistway lighting system

Part Number	Description
Custom order	Shaft Light machine room kit, control box with European power outlet (UK13 amp) and illuminated switch for lights
Custom order	Shaft Light hoistway kit, 36 W fluorescent lamps with polycarbonate shields
Custom order	Shaft Light pit kit, light switch with European power outlet (UK13 amp) and optional stop and alarm switches

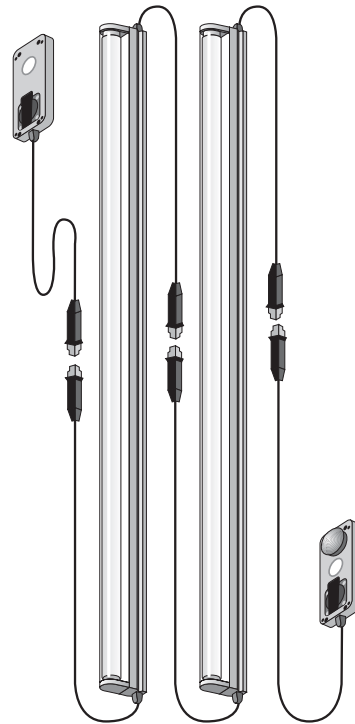
The Shaft Light System is a modular series of components that ease installation of a shaft emergency lighting system.

All components are preassembled and have modular Molex connectors for fast and simple assembly. The electrical cables are 1.5 mm² size and can be specified with either PVC, rubber or halogen-free jackets. All components are tested prior to shipment and are ready to install. Up to 16 hoistway modules (lamps) can be wired into a single circuit.

The Machine Room Module is a control box that includes the shaft light switch and either a standard European electrical outlet or UK 13 amp socket outlet. An internal impulse relay activates the system. Cables are provided for mains connection and come with Molex connectors provide quick attachment to the shaft lights. The light switch illuminates when the shaft lighting is activated.

The Hoistway Modules are preassembled 36 watt fluorescent lamps and fixtures (IP 21 rated) protected with polycarbonate shields. The units are wired and plug into each other with Molex connectors.

The Pit Module (basic construction) consists of a light switch with a standard European electrical outlet or UK 13 amp socket outlet. Optional configurations include the addition of an Emergency Stop Button and an Alarm Button.



Q2500 Seismic Sensor

Part Number	Description
QTRC-2500-VP	Q2500 seismic sensor, with LCD interface and meter function, Contacts can use variable power up to 5A @ 240 VAC

The Draka Q2500 seismic sensor is a user-friendly system that detects and records vertical and horizontal seismic ground movements. The system stores the peak acceleration (measured in Gs) in each axis for up to 15 seismic events and displays it on the easy-to-understand LCD interface. Alarm levels are preset to meet elevator safety code or can be user-defined. Latching contacts can be remotely reset.

The unit also functions as a meter that displays real-time acceleration and angle of deflection. It meets or exceeds ASCE 25-97, ASME 17.5, and CSA B44.1

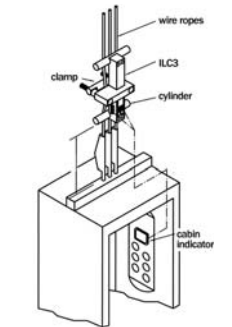


Specialty Electronics

Load weighing devices for multiple ropes

Micelect ILC3 load weighing devices

Part Number	Description	Electrical Information
LW-ILC3-M-STD	Load weighing device with three outputs and cable connections, for 1:1 roping (6000 kg capacity), automatic calibration, (select spacers, clamp and optional cab display from below)	24 - 48 VDC, 3 relays, 250V/3A
LW-ILC3-C-STD	Load weighing device with three outputs and connectors, for 1:1 roping (6000 kg capacity), automatic calibration, (select spacers, clamp and optional cab display from below)	24 - 48 VDC, 3 relays, 250V/3A
LW-ILC3-M-ANLOG	Load weighing device with analog output, like above but with 0-20, 4-20 or 0-24 mA analog output	0-20, 4-20 or 0-24 mA analog output
LW-ILC3-C-ANLOG	Load weighing device with analog output and connectors, like above but with 0-20, 4-20 or 0-24 mA analog output	0-20, 4-20 or 0-24 mA analog output



Micelect ILC2 load weighing devices

Part Number	Description	Electrical Information
LW-ILC2-M-STD	Load weighing device with two outputs and cable connections, for 1:1 roping (3500 kg capacity), automatic calibration, (select spacers, clamp and optional cab display from below)	24 - 48 VDC, 2 relays, 250V/3A
LW-ILC2-C-STD	Load weighing device with two outputs and connectors, for 1:1 roping (3500 kg capacity), automatic calibration, (select spacers, clamp and optional cab display from below)	24 - 48 VDC, 2 relays, 250V/3A

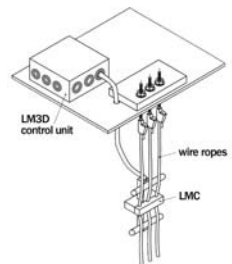
Micelect LMC load weighing devices

Part Number	Description	Electrical Information
LW-LMC	Load weighing device (body only) for 2:1 (8000 kg capacity) or 4:1 roping (16000 kg capacity) automatic calibration. Select control unit, spacers, clamp and optional cab display from below.	
LW-3DSTD	Control unit for LMC with three outputs	100 - 240 VAC, 3 relays, 250V/3A
LW-ANLOG	Control unit for LMC with analog output, like above but with 0-20, 4-20 or 0-24 mA analog output	0-20, 4-20 or 0-24 mA analog output



Clamps and spacers for Micelect LWDs

Part Number	Description
LW-ILC3-CLAMP-2	ILC3 size 2 clamp, 76 to 115 mm of rope spread, two LW-SPACER required
LW-ILC3-CLAMP-3	ILC3 size 3 clamp, 116 to 160 mm of rope spread, two LW-SPACER required
LW-ILC3-CLAMP-4	ILC3 size 4 clamp, 161 to 188 mm of rope spread, two LW-SPACER required
LW-ILC3-CLAMP-5	ILC3 size 5 clamp, 189 to 263 mm of rope spread, four LW-SPACER required
LW-LMC-CLAMP-2	ILC2 and LMC size 2 clamp, 56 to 75 mm of rope spread, two LW-SPACER required
LW-LMC-CLAMP-3	ILC2 and LMC size 3 clamp, 76 to 115 mm of rope spread, two LW-SPACER required
LW-LMC-CLAMP-4	ILC2 and LMC size 4 clamp, 116 to 160 mm of rope spread, two LW-SPACER required
LW-LMC-CLAMP-5	ILC2 and LMC size 5 clamp, 161 to 188 mm of rope spread, four LW-SPACER required
LW-LMC-CLAMP-6	ILC2 and LMC size 6 clamp, 189 to 225 mm of rope spread, four LW-SPACER required
LW-LMC-CLAMP-7	ILC2 and LMC size 7 clamp, 226 to 263 mm of rope spread) four LW-SPACER required
LW-SPACER-XX	Spacers for ILC2, ILC3 and LMC. two required for clamp sizes 2, 3 and 4, four for clamp sizes 5, 6 and 7 Spacers are available in sizes 8 to 16 mm - when ordering, substitute a two-digit number for the XX in the part number (example: an 8 mm spacer is LW-SPACER-08 - a 13 mm spacer is LW-SPACER-13)



Micelect LWDs provide real-time data on cab weight and are accurate to within 0.5%. No test weights are required for calibration. All units can be connected to one of two optional cab-mounted loading/overload displays.

The ILC2 is for 1:1 roping with a cabweight + capacity of 3500 kg*. The ILC3 is for 1:1 roping with a cabweight + capacity of 6000 kg*. Both have integrated sensor body/control units and are available with multiple outputs (the ILC2 has two, the ILC3 has three).

The LMC is for 2:1 roping with a cab weight + capacity of 8000 kg* OR 4:1 roping with a total cab weight and capacity of 16000 kg*. The LMC is installed in the overhead. It's available with multiple outputs. A separate control unit is required and is normally mounted in the machine room.

* call if your cab weight + capacity is more

Specialty Electronics

Load weighing devices for single ropes, portable units, control units and cab displays

Micelect WR load weighing devices

Part Number	Description	Electrical Information
LW-WR-SENSOR-XX	WR load weighing device, for individual ropes (body only) - control unit required (see below) The WR attaches to individual ropes supporting a weight + capacity of 1000 kg per rope. Up to eight WR sensors can be wired into a single separate MWR control unit. Individual rope sensors are available in sizes 8 to 16 mm, when ordering, substitute atwo-digit number for the XX in the part number (example: a sensor for an 8 mm rope is LW-WR-SENSOR-08 - a sensor for a 13 mm rope is LW-WR-SENSOR-13)	
LW-MWR-STAND	Control unit for WR load weighing device, with three outputs, for 2 - 8 ropes	100 - 240 VAC, 3 relays, 250V/3A
LW-MWR-ANLOG	Control unit for WR load weighing devicewith analog output, like above but with 0-20, 4-20 or 0-24 mA analog output	0-20, 4-20 or 0-24 mA analog output



Micelect portable load weighing devices

Part Number	Description	Electrical Information
LW-MW1-4000KGS	Portable weighing unit, (4,000 kg capacity) for measurement of elevator car and/or counterweight	

Micelect hydraulic pressure sensors

Part Number	Description	Electrical Information
LW-SPB-M-BSP-STD	Hydraulic pressure sensor, with 2 relay outputs - NOTE: roller guides are required at least on top or on bottom of cab	
LW-SPB-M-BSP-020	Hydraulic pressure sensor, like above but with 0-20 mA analog output	0-20 mA analog output

Micelect under machine and undercab sensors

Part Number	Description	Electrical Information
LW-CCP-SENSOR	Under machine bedplate sensor, minimum of two sensors recommended, up to 4 may be used NOTE: LW-3DSTD or LW-ANLOG control unit required	
LW-CAB-SENSOR	Undercab sensor, sold in pairs, 4 to 16 may be used NOTE: LW-CAB-LMCAB, LW-3DSTD or LW-ANLOG control unit required	
LW-CAB-LMCAB	Control unit for CAB sensors, with 2 relay output	
LW-3DSTD	Control unit for CCP and CAB (and LMC) with three outputs	100 - 240 VAC, 3 relays, 250V/3A
LW-ANLOG	Control unit for CCP and CAB (and LMC) with analog output, like LW-3DSTD but with 0-20, 4-20 or 0-24 mA analog output	0-20, 4-20 or 0-24 mA analog output

Cab displays for Micelect devices

Part Number	Description	Electrical Information
LW-CABDISPLA-ML	Cab display, overload shown by flashing and intermittent buzzing	
LW-CABDISPLA-LPM	Cab display, load shown by progressively lit LEDs, overload by intermittent buzzing NOTE: cannot be used with LM-ILC3-M-ANLOG	

Specialty Electronics

STM LIFT Safety® emergency telephone

Safety telephone system - meets EN 81.28 and 81.70

Part Number	Product Code	Description
VODAECO-12	34213NCO	Phone/loudspeaker with cab microphone and pit group, in metal case, 12 VDC - 230 VAC version available
VODAECO-12N	34213NTO	Phone/loudspeaker, electronics only, with cab microphone and pit group, 12 VDC - 230 VAC version available
VODAECO-03	340223STO	Phone with roof group, cab microphone and pit group, in metal case, 12 VDC - 230 VAC version available
VODAECO-03N	340223NCO	Phone, with roof group, electronics only, cab microphone and pit group, 12 VDC - 230 VAC version available
VODAECO-03PG	340232ST1	Phone with roof group, cab microphone and pit group, GSM-adaptable, in metal case, 230 VAC
VODAECO-03PGN	340232NC1	Phone with roof group, electronics only, cab microphone and pit group, GSM-adaptable, 230 VAC
VODAECO-03GS	340232ST2	GSM phone with roof group, cab microphone and pit group, in metal case, 230 VAC
VODAECO-03GSN	340232NC2	GSM phone, with roof group, electronics only, cab microphone and pit group, 230 VAC

VODAECO-12



The STM LIFT Safety phone is easily activated from either location. If a passenger pushes the alarm button or if a technician trapped in the pit or on top of the car presses the exterior alarm, the LIFT Safety phone calls the control center (or any other number, such as a cellular phone) and activates the hands-free communication procedure.

VODAECO-12 - this integrated communicator/loudspeaker attaches to the top of the car. The speaker requires no opening - it uses the car as a resonance chamber. Pushing the emergency button activates a roof microphone and signals the control center over the PSTN system. This unit also includes a 'pit group' - a push button and microphone reachable by personnel trapped in the pit. The VODAECO-12N is the electronics without the housing and mounts in the cab button panel.

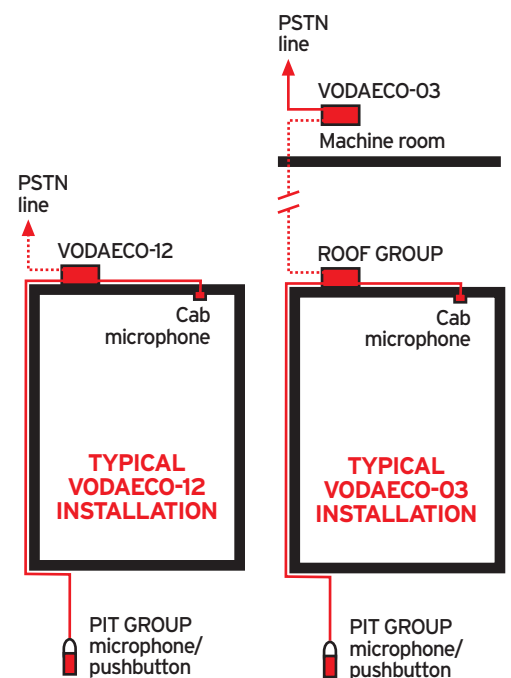
VODAECO-03 - a 'roof group' (loudspeaker with microphone) attaches to the top of the car like the VODAECO-12. Pressing the emergency button activates a circuit to the VODAECO-03 in the machine room which signals the control center over PSTN. This unit also includes a pit group. The VODAECO-03N is the electronics without the housing and mounts in the machine room.

VODAECO-03PG - identical to the VODAECO-03 except that communication to the control centre is over PSTN but is expandable to hold a GSM circuit. The VODAECO-03PGN is the electronics without the housing and mounts in the machine room.

VODAECO-03GS - identical to the VODAECO-03 except that communication to the control centre is over either PSTN or GSM. It is mounted on top of the well or at the end of the cable (depending on signal quality). The VODAECO-03GSN is electronics without the housing, and mounts in the machine room (depending on GSM signal quality).

The LIFT Safety telephone can be programmed by means of a normal telephone both in local and remote modes or from a digital telephone switch (our proprietary SAFETYCentre® or similar device). A PC with monitor and dedicated software for the service centre is part of the central unit.

The LIFT Safety telephones fully conform with EEC Directive 95/16, Annex 1, paragraphs 4.5 and 4.9 dated 29.06.95, Standards EN 81.28 and 81.70.



Formula Systems Orator™ Digital annunciator

Part Number	Description
FSM-0001	Orator FSM-1 voice messaging system, capacity of 15 messages, 153 L x 130 W x 27.5 D
FSM-0002	Orator FSM-2 voice messaging system, capacity of 106 messages, 153 L x 178 W x 30 D
FPR-0001	Programming system for FSM-1 & FSM-2, Windows OS

Orator is a unique digital messaging system for elevator floor annunciation and warnings. Orator provides messages in any language and is capable of onsite customer programming using Formula Systems 'bespoke' programmin system and software. The units are compact, easily installed and offer fine sound quality.

FSM-0001 - Excellent for low-rise applications. Holds up to 15 user-selected messages.

FSM-0002 - Excellent for high-rise applications. Holds up to 106 user-selected messages.

FPS-0001 - Programming system for FSM systems.

