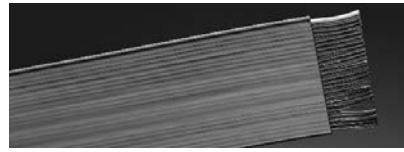


# Flat Travelling Cable

## 300 - 500V



Complies with  
EN 50214

### H05VVH6-F power/signal only, unsupported

Part Number	Product Code	Number/Size of Conductors	Steel Support Diameter	Loop Diameter	Cable Dim. H x W	Cable Net Weight
16-712-07	12G075 mm <sup>2</sup>	12 / 0.75 mm <sup>2</sup>	n/a	457 mm	4 x 34 mm	260 kg/km
16-718-07	18G075 mm <sup>2</sup>	18 / 0.75 mm <sup>2</sup>	n/a	457 mm	4 x 48 mm	384 kg/km
16-720-07	20G075 mm <sup>2</sup>	20 / 0.75 mm <sup>2</sup>	n/a	457 mm	4 x 55 mm	429 kg/km
16-724-07	24G075 mm <sup>2</sup>	24 / 0.75 mm <sup>2</sup>	n/a	457 mm	4 x 66 mm	513 kg/km
16-812-07	12G10 mm <sup>2</sup>	12 / 1.0 mm <sup>2</sup>	n/a	457 mm	4 x 35 mm	295 kg/km
16-824-07	24G10 mm <sup>2</sup>	24 / 1.0 mm <sup>2</sup>	n/a	457 mm	4 x 68 mm	583 kg/km
16-202-07	20G075 mm <sup>2</sup> + 2(2x0.5c)	20 / 0.75 mm <sup>2</sup> 2 sh. pairs / 0.5 mm <sup>2</sup>	n/a	457 mm	5 x 58 mm	545 kg/km

### H05VVD3H6-F power/signal only, steel supported

Part Number	Product Code	Number/Size of Conductors	Steel Support Diameter	Loop Diameter	Cable Dim. H x W	Cable Net Weight
16-824-17	24G1.0 mm <sup>2</sup> ST	24 / 1.0 mm <sup>2</sup>	3.2 mm	457 mm	4.3 x 73.6 mm	634 kg/km

### O5ZZH6-F Halogen-free, unsupported

Part Number	Product Code	Number/Size of Conductors	Steel Support Diameter	Loop Diameter	Cable Dim. H x W	Cable Net Weight
16-512-07	12G0.75 mm <sup>2</sup>	12 / 0.75 mm <sup>2</sup>	n/a	457 mm	4 x 34 mm	235 kg/km
16-516-07	16G0.75 mm <sup>2</sup>	16 / 0.75 mm <sup>2</sup>	n/a	457 mm	4 x 44 mm	305 kg/km
16-518-07	18G0.75 mm <sup>2</sup>	18 / 0.75 mm <sup>2</sup>	n/a	457 mm	4 x 49 mm	352 kg/km
16-520-07	20G0.75 mm <sup>2</sup>	20 / 0.75 mm <sup>2</sup>	n/a	457 mm	4 x 55 mm	394 kg/km
16-524-07	24G0.75 mm <sup>2</sup>	24 / 0.75 mm <sup>2</sup>	n/a	457 mm	4 x 66 mm	465 kg/km
16-906-07	6G1.0 mm <sup>2</sup>	6 / 1.0 mm <sup>2</sup>	n/a	457 mm	4 x 19 mm	146 kg/km
16-912-07	12G1.0 mm <sup>2</sup>	12 / 1.0 mm <sup>2</sup>	n/a	457 mm	4 x 35 mm	270 kg/km
16-916-07	16G1.0 mm <sup>2</sup>	16 / 1.0 mm <sup>2</sup>	n/a	457 mm	4 x 46 mm	356 kg/km
16-918-07	18G1.0 mm <sup>2</sup>	18 / 1.0 mm <sup>2</sup>	n/a	457 mm	4 x 51 mm	400 kg/km
16-920-07	20G1.0 mm <sup>2</sup>	20 / 1.0 mm <sup>2</sup>	n/a	457 mm	4 x 57 mm	444 kg/km
16-924-07	2G41.0 mm <sup>2</sup>	24 / 1.0 mm <sup>2</sup>	n/a	457 mm	4 x 68 mm	532 kg/km

Custom cable designs are available.

All cables are metermarked.

Operating temperature range is -5 to +70°C.

Insulation colours: ground is yellow / green and all others are black with number printing.

Parallel construction flat travelling cable is recommended for speeds up to 1000 ft/min • 5 m/sec.

Flat travelling cables can be connectorized for faster installation.

Flat cable installation kits save time and money. See the inside back cover for details.

See page 138 for cable and wire stripping tools.

#### Component Specifications

##### Stranded Conductors

Bunch-stranded bare soft drawn copper, insulated with coloured 70° C flame-retardant PVC, identified by insulation colour or a combination of insulation colour and numerical markings appearing at least 13 times per meter.

##### Steel Support

Preformed, flexible, low torsion, zinc-coated and steel wire rope.

##### Jacket

70° C PVC specifically compounded for flexibility and abrasion resistance.

# Flat Cable Suspension Devices

Nylon/plastic construction for unsupported flat travelling cables

## FCSD-2 for cables up to 42 mm wide

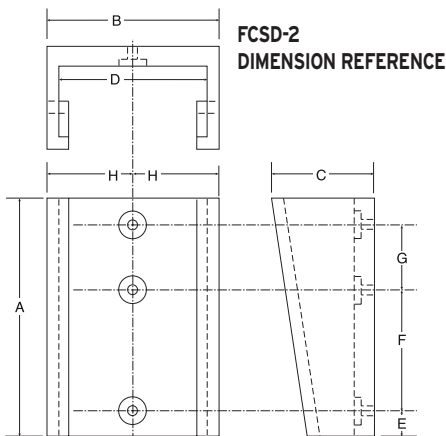
Part Number	Drawing Reference	Dimensions
FCSD-2	A	100 mm
	B	60 mm
	C	42 mm
	D	52 mm
	E	12 mm
	F	43 mm
	G	31 mm
	H	30 mm

Mounting holes are 5 mm with 14 mm counterbore

The FCSD-2 is made of a durable nylon/plastic. It consists of a bracket (dimensions listed above) that attaches to the hoistway wall or the car, and a clamping wedge that secures the cable in the bracket.

The FCSD-2 is designed to hold up to two cables totaling a maximum thickness of 12 mm and maximum width of 42 mm. If multiple cables are being supported, the narrowest width cable must not be less than 70% of the width of the widest cable.

Order two devices per cable, one for the car and one for the hoistway.



FCSD-2  
DIMENSION REFERENCE

## FCSD-3 for cables up to 76 mm wide

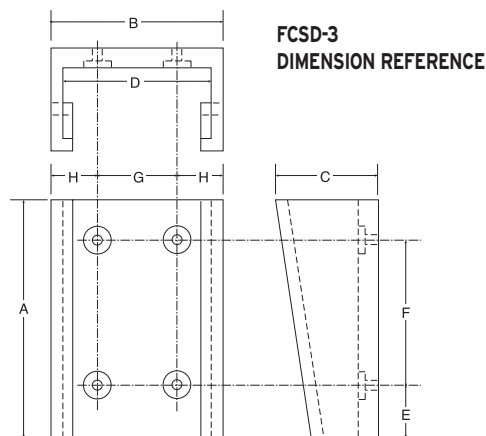
Part Number	Drawing Reference	Dimensions
FCSD-3	A	120 mm
	B	87 mm
	C	52 mm
	D	75 mm
	E	27 mm
	F	73 mm
	G	40 mm
	H	23.5 mm

Mounting holes are 6.35 mm with 14 mm counterbore

The FCSD-3 is made of a durable nylon/plastic. It consists of a bracket (dimensions listed above) that attaches to the hoistway wall or the car, and a clamping wedge that secures the cable in the bracket.

The FCSD-3 is designed to hold up to three cables totaling a maximum thickness of 15 mm and maximum width of 76 mm. If multiple cables are being supported, the narrowest width cable must not be less than 70% of the width of the widest cable.

Order two devices per cable, one for the car and one for the hoistway.

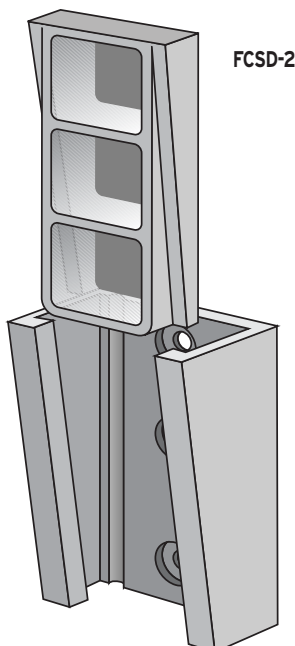


FCSD-3  
DIMENSION REFERENCE

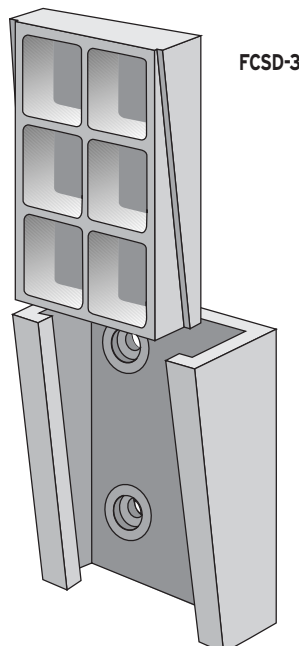
### Component Specifications

#### Materials

Both components are made of a molded nylon that resists abrasion, temperature and solvents.



FCSD-2



FCSD-3